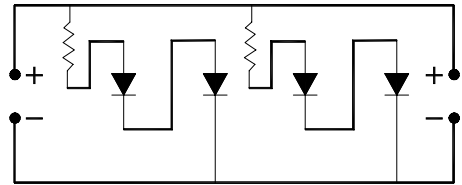
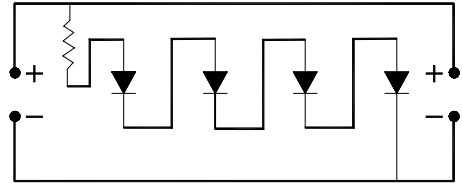


Note : All Dimensions are in mm



2 Series, 2 Parallel 4 LEDs

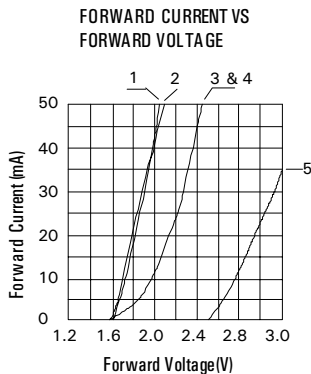


4 Series LEDs

Tolerance ± 0.2 mm

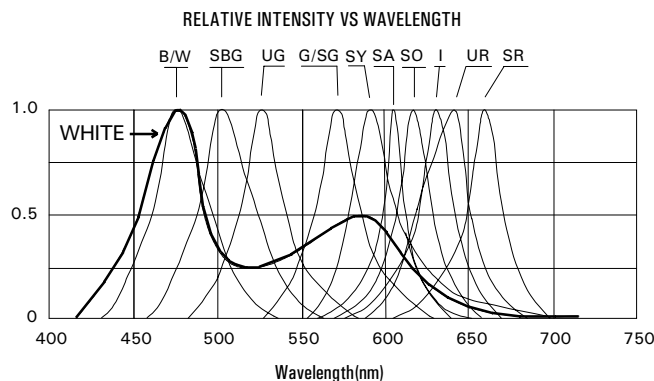
| PART NO. | | | | | | | | | | | |
|---|--|------------------------|------------|-----------|------|--------|-------|-------|-------------|------------|---|
| OPERATING CHARACTERISTICS AT 25°C (Bigger Display may have more than one LED chip per segment) | | UNITS | SYMBOL | WHITE | RED | YELLOW | AMBER | GREEN | ULTRA GREEN | ULTRA BLUE | Circuit with Current Regulator |
| Semiconductor Composition | | | | | | | | | | | |
| Forward Voltage - Typical @ 40mA | | V | V_F | 8.0V | 4.0V | 4.0V | 4.0V | 4.0V | 4.0V | 4.0V | |
| Forward Voltage - Current | | V | V_{FM} | 50mA | 4.5V | 4.5V | 4.5V | 4.5V | 4.5V | 4.5V | |
| Reverse Current @ $V_R = 5V$ | | mA | I_R | | | | | | | | |
| Color Coordinates | | x,y | | | | | | | | | |
| Color Temperature | | $^{\circ}C$ | D_1 | | | | | | | | |
| Color Rendering index | | CR1 | CR_1 | 50 | 35 | 35 | 35 | 35 | 35 | 50 | |
| Luminous Flux | | lm | α_V | 50 | 35 | 35 | 35 | 35 | 35 | 50 | |
| ABSOLUTE MAXIMUM RATINGS AT 25°C | | | | | | | | | | | Both Components need adequate Heat Sinking |
| Reverse Voltage | | V | V_R | 5 | | | | | | | 100mA per LED & derated at 1mA per degree C |
| Forward Current (avg) | | mA | I_F | as in the | | | | | | | |
| Operating / Storage Temperature Range | | -20° C to + 85° C | | | | | | | | | |
| Lead Soldering Temperature | | < 260° C for 5 Seconds | | | | | | | | | |
| Series Resistor to be used per LED : 6 Ohms (2W~3W) @ 5V Supply | | | | | | | | | | | |

ELECTRICAL CHARACTERISTIC CURVES



1. AlGaAs : I, SR

2. GaP : G



3 & 4. InGaP : SG, SY, SA, UR, SO

5. GaInN : B, S/BG, UG, W

